

Assembling Your Huot WorkTable

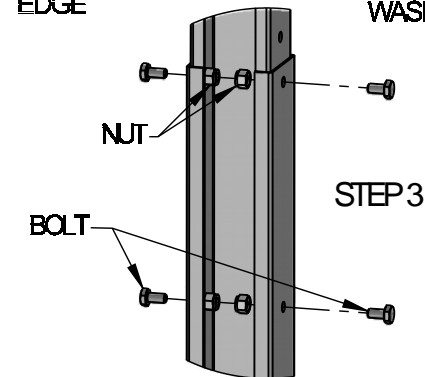
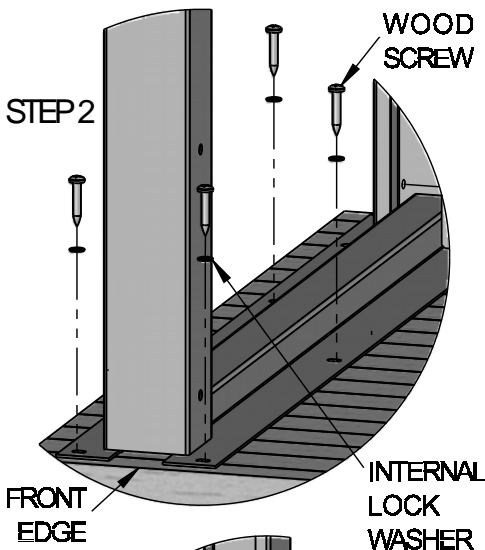
Tools needed:
 #3 Phillips Screwdriver,
 7/16" Box Wrench,
 7/16" Socket and driver

IMPORTANT

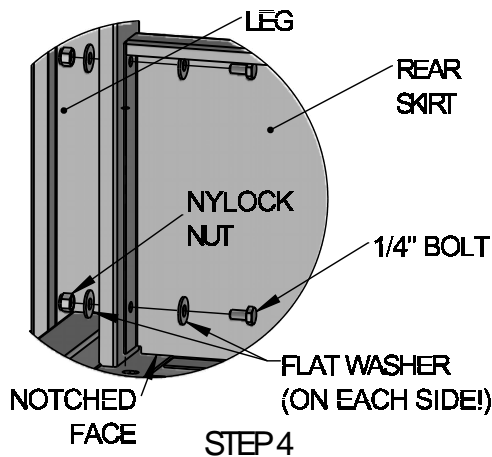
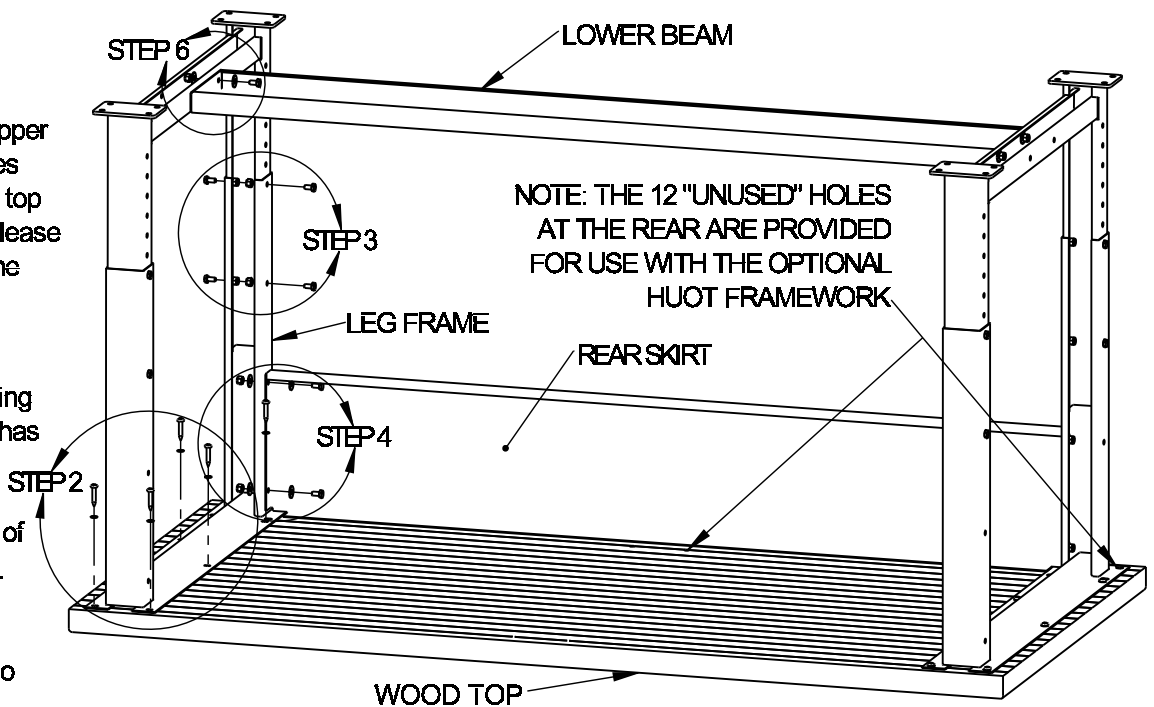
If your WorkTable includes the upper Framework, the large drilled holes must be extended through wood top prior to assembly of the table. Please refer to the instructions that came with your Framework.

1) Lay wood top on a flat, clean surface with the bottom side facing up. (The bottom is the side that has the holes.)

2) Set a Leg Frame on one side of the wood top, aligning ALL holes. Partially install six (6) wood screws, with one (1) lock washer one each, in the smaller holes (do not tighten yet). Repeat for the other leg (on the opposite side).



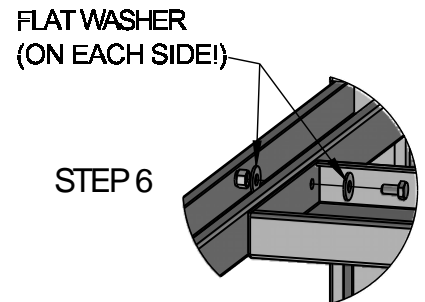
3) The total height of this unit is adjustable from 25.5" to 37" (without casters). Expand the leg frames to your desired height and install four (4) 1/4" bolts in each leg from the outside as shown, threading the nuts from the inside.



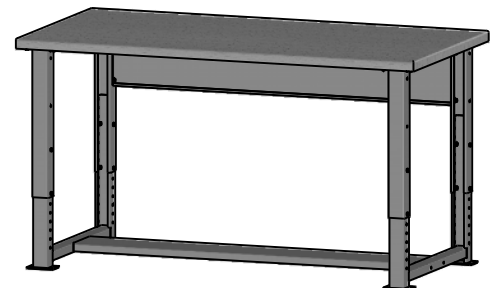
4) Install the Rear Skirt at the rear (which is the side with the 12 larger "unused" holes in the wood top). The open side of the panel must face inward with the notched face tight against the wood top as shown. Install one (1) bolt, two (2) washers, and one (1) nut as shown in each of the four (4) holes. *Note: If the legs are adjusted to the shorter positions and bolts pass through the inner leg, no inner washer is needed.

5) Firmly tighten first the four (4) skirt bolts, then the twelve (12) wood screws, then the sixteen (16) leg bolts.

6) Mount Lower Beam with its cavity facing away from the top with four (4) 1/4" bolts and nuts and eight (8) washers as shown.



7) With an assistant, turn Work Bench right side up. Your WorkBench is now ready for use. Check all fasteners periodically for tightness.



HUOT MFG. CO.
 550 N Wheeler St.
 St. Paul, MN 55104

Ph: (651) 646-1869
 Fax: (651) 646-0457
 www.Huot.com